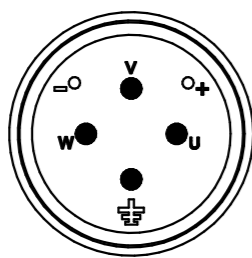
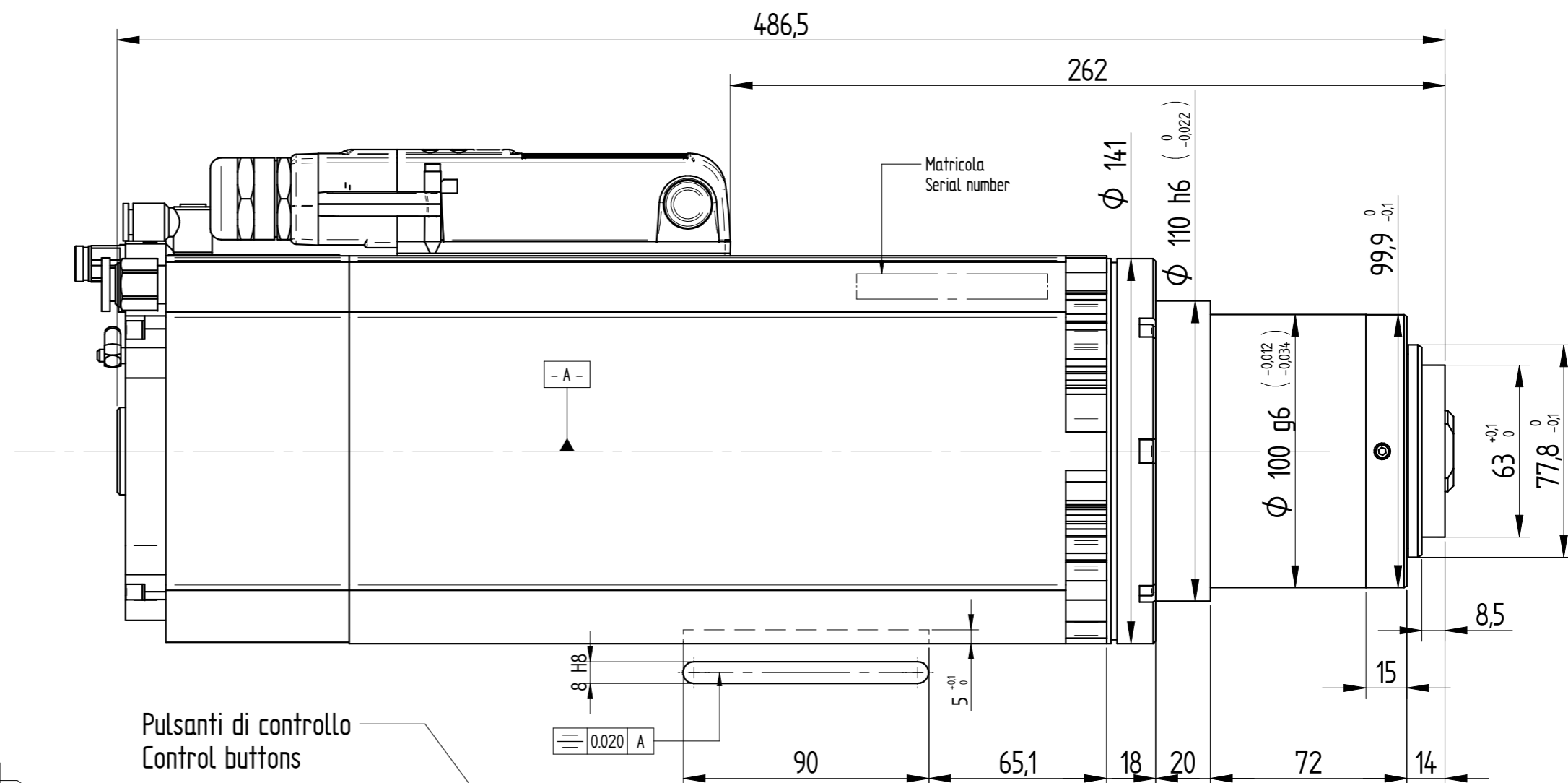
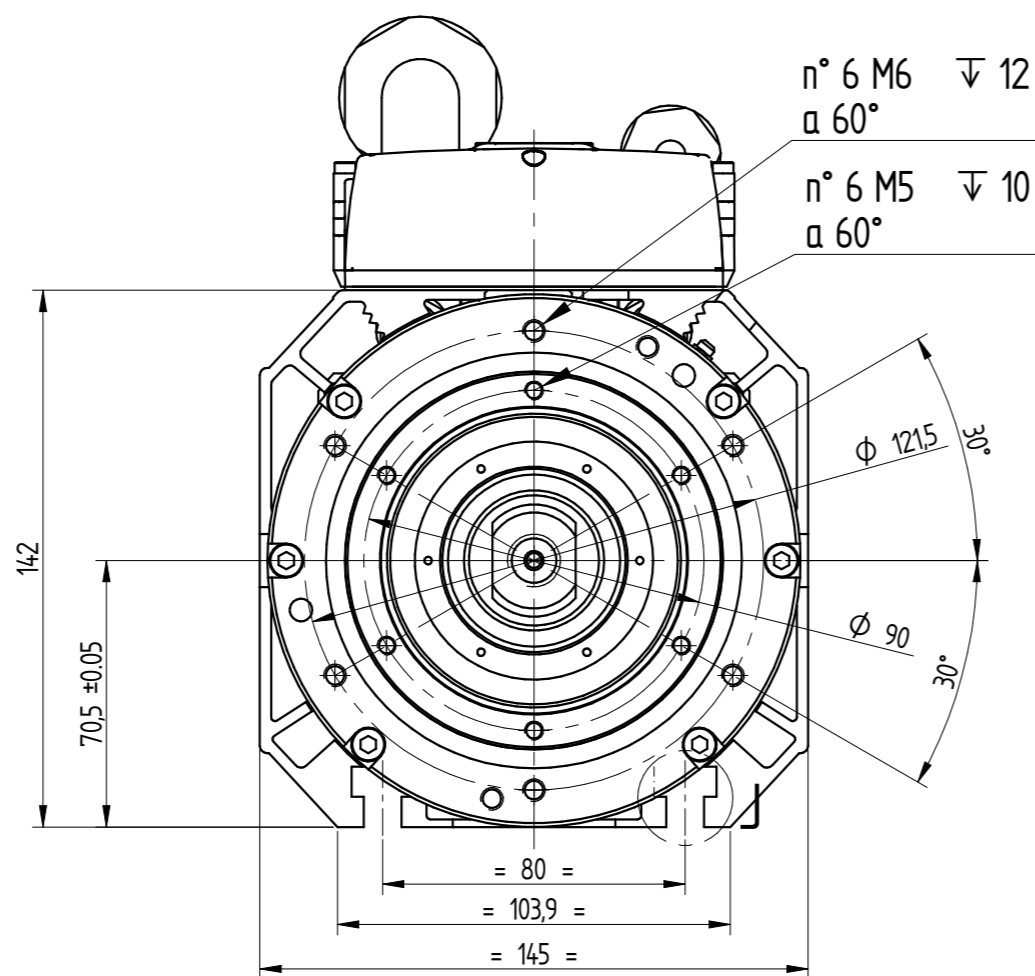
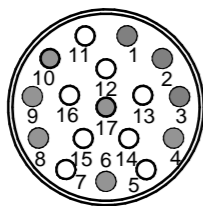


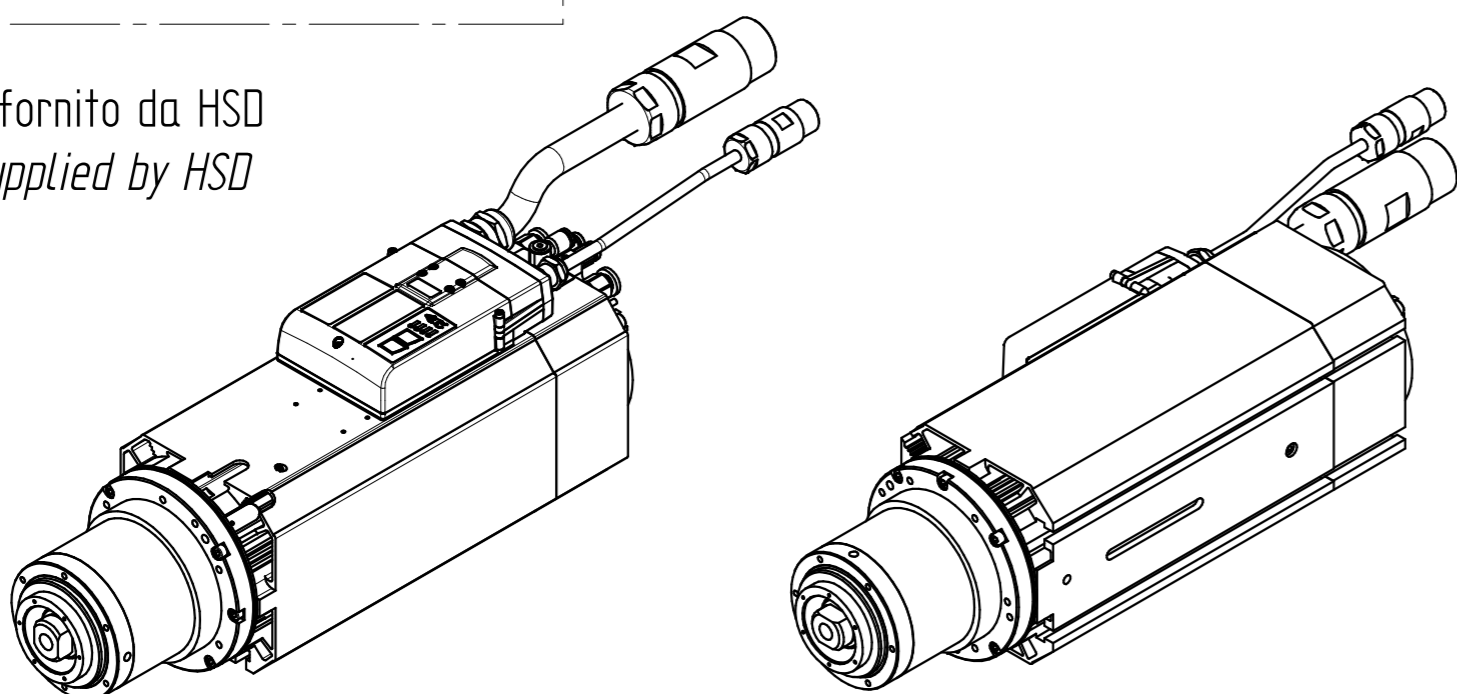
CONNETTORE POTENZA / POWER CONNECTOR		
PIN	DESCRIZIONE	CAVO
⊕	TERRA / GROUND	Giallo/Verde
U	U Fase Motore / Motor Phase	1
V	V Fase Motore / Motor Phase	2
W	W Fase Motore / Motor Phase	3
+	NOT USED	/
-	NOT USED	/
CORPO / HOUSING SCHERMATURA / SHIELDING		



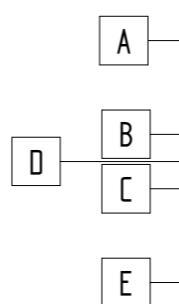
CONNETTORE SEGNALI	
PIN	DESCRIZIONE
1	OUTPUT S2 (tool unlocked)
2	OUTPUT S1+S4+S5 (tool locked)
3	OUTPUT spindle rotation
4	+24V DC sensors
5	NOT USED
6	0V DC sensors
7	NOT USED
8	ELECTRONICS WORKING
9	OUTPUT (no tool)
10	SONDA TERMICA MOTORE
11	NOT USED
12	NOT USED
13	NOT USED
14	NOT USED
15	NOT USED
16	NOT USED
17	SCHERMO



Connettore femmina fornito da HSD
Female connector supplied by HSD



SEGNALI - SIGNALS
Lunghezza 500 mm
Length 500 mm



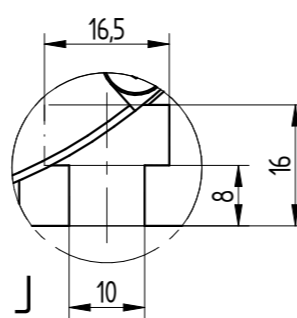
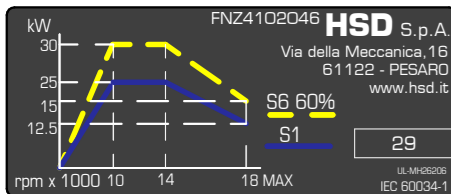
POTENZA - POWER
Lunghezza 500 mm
Length 500 mm

Pulsanti di controllo
Control buttons

Targa motore
Marking plate

ES951 A 2510 S		ASYNCHRONOUS 3-PHASE MOTOR		Ta: 20°C	
V	380	380	380	Poles: 4	
Hz	333	466	600	Cosφ = 0,8	
rpm	10000	14000	18000	η = 0,8	
KW	25 (30)	25 (30)	12,5 (15)	IP 54	
A	50 (60)	53 (63,6)	23,5(28,2)	INS. CL. F	

FNZ4102046 Rev.00 (SP.119.150.43 AI)						
Tensione nominale (*)	Nennspannung (*)	Rated voltage (*)	V	380	380	380
Frequenza nominale	Nennfrequenz	Rated frequency	Hz	333	466	600
Velocità nominale	Nominale Geschwindigkeit	Rated speed	rpm	10000	14000	18000
Tipo di servizio	Betriebsart	Duty type		S1 cont. 60%	S1 cont. 60%	S1 cont. 60%
Potenza nominale	Nennleistung	Rated power	KW	25 30	25 30	12,5 15
Corrente nominale	Nennstrom	Rated current	A	50 60	53 63,6	23,5 28,2
Rendimento nominale η	Nennwirkungsgrad η	Rated efficiency η		0,92		
Fattore di potenza cos φ	Leistungsfaktor cos φ	Power factor cos φ		0,78		
Numero di poli	Polzahl	Number of poles		4		
Classe di isolamento	Isolierklasse	Insulation class		F		
Tipo di raffreddamento	Kühlungstyp	Type of cooling		Liquido / Flüssigkeitsgekühlt / Liquid Cooling		
Peso	Gewicht	Weight	kg	29		

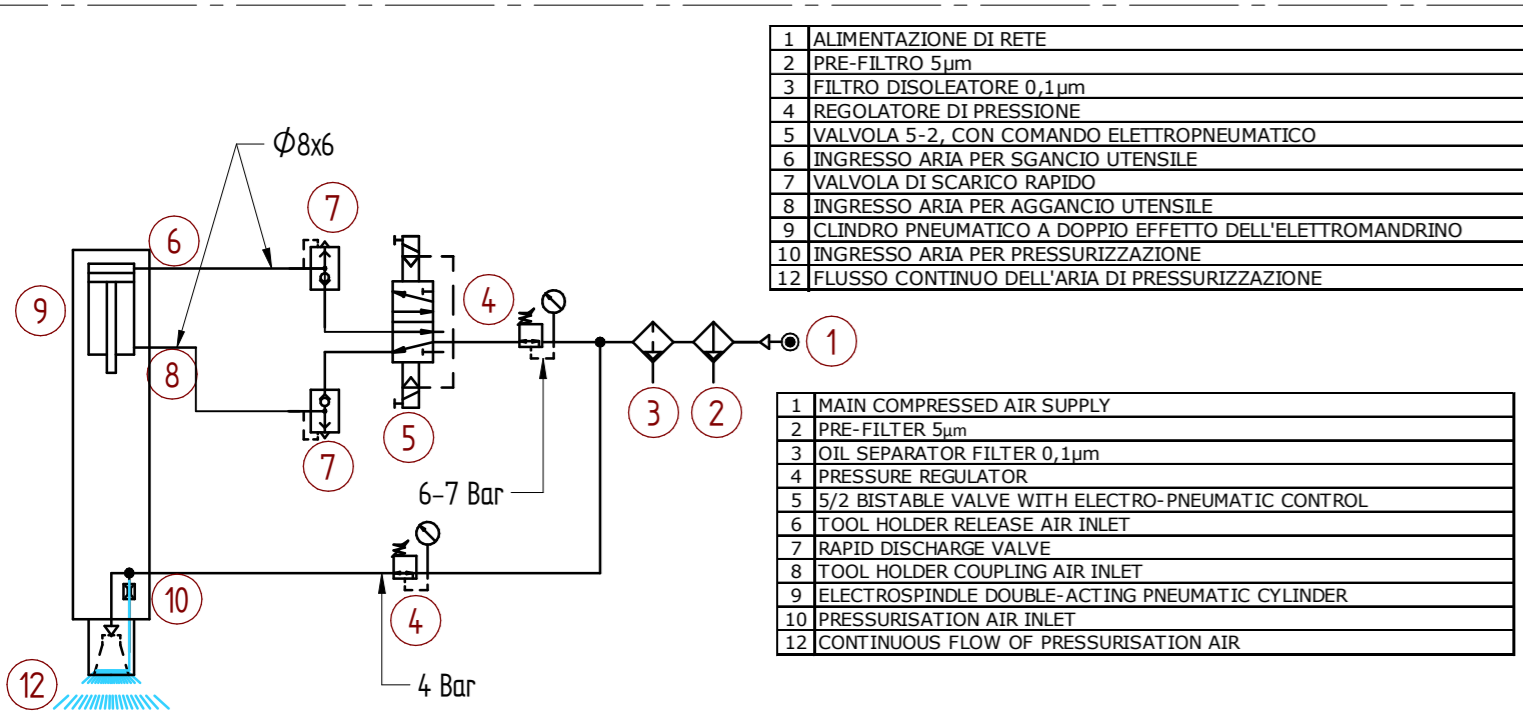


Dettaglio J

TABLE 1 / TABELLA 1			
PNEUMATIC-HYDRAULIC CONNECTIONS / CONNESSIONI PNEUMATICHE-IDRAULICHE			
POS.	DESCRIPTION	DESCRIZIONE	NOTE
A	MOTOR COOLANT OUTLET	USCITA REFRIGERANTE MOTORE	ø10
B	PRESSURIZATION AND CONE CLEANING AIR INLET	INGRESSO ARIA PRESSURIZZAZIONE E PULIZIA CONO	ø8 - 4BAR
C	TOOL RELEASE	SBLOCCAGGIO UTENSILE	ø8 - 6 BAR - V=270 cm³
D	TOOL LOCKING	BLOCCAGGIO UTENSILE	ø8 - 6 BAR - V<270 cm³
E	MOTOR COOLANT INLET	INGRESSO REFRIGERANTE MOTORE	ø10 - Q=5 l/min - T=25±3°C - P=3,4 KW

TABLE 2 / TABELLA 2			
SENSORS AND THEIR BEHAVIOR / SENSORI E LORO COMPORTAMENTO			
SENSORS / SENSORI			
S5	PISTON BACK	PISTONE A RIPOSO	
S1+S4+S5	DRAWBAR POSITION: TOOL CORRECTLY CLAMPED	UTENSILE CORRETTAMENTE AGGANCIATO	
S2	DRAWBAR POSITION: TOOL UNCLAMPED	UTENSILE ESPULSO	
S3	SPINDLE ROTATION	ROTAZIONE MANDRINO	
POSITION / POSIZIONE		S1+S4+S5	S2
P1	TOOL UNCLAMPED	0	1
P2	TOOL CLAMPED	1	0
P3	CLAMPED WITHOUT TOOL OR TOO LONG / TOO SHORT TOOL CLAMPED	0	0

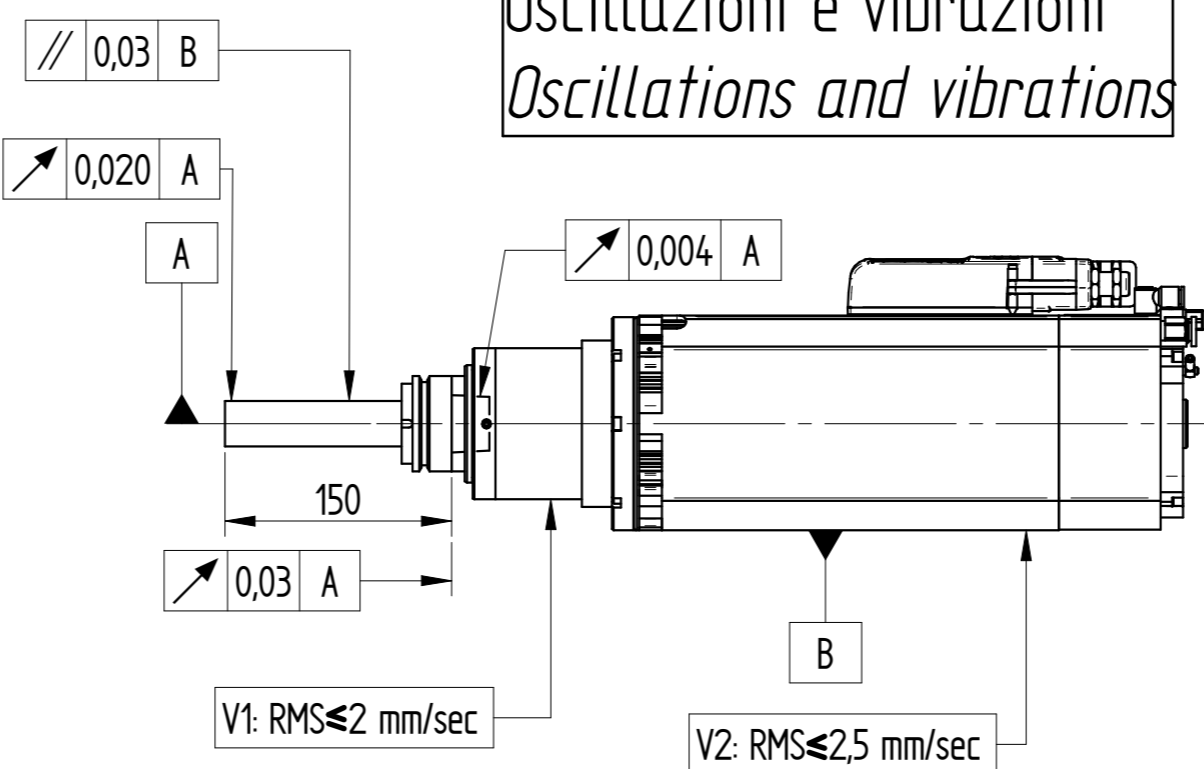
Controllare sempre il manuale di assemblaggio - Always check manual before use.



- 1 ALIMENTAZIONE DI RETE
- 2 PRE-FILTRO 5µm
- 3 FILTRO DISOLEATORE 0,1µm
- 4 REGOLATORE DI PRESSIONE
- 5 VALVOLA S-2, CON COMANDO ELETTROPNEUMATICO
- 6 INGRESSO ARIA PER SGANCIO UTENSILE
- 7 VALVOLA DI SCARICO RAPIDO
- 8 INGRESSO ARIA PER AGGANCIAMENTO UTENSILE
- 9 CLINDRO PNEUMATICO A DOPPIO EFFETTO DELL'ELETTROMANDRINO
- 10 INGRESSO ARIA PER PRESSURIZZAZIONE
- 12 FLUSSO CONTINUO DELL'ARIA DI PRESSURIZZAZIONE

- 1 MAIN COMPRESSED AIR SUPPLY
- 2 PRE-FILTER 5µm
- 3 OIL SEPARATOR FILTER 0,1µm
- 4 PRESSURE REGULATOR
- 5 S/2 BISTABLE VALVE WITH ELECTRO-PNEUMATIC CONTROL
- 6 TOOL HOLDER RELEASE AIR INLET
- 7 RAPID DISCHARGE VALVE
- 8 TOOL HOLDER COUPLING AIR INLET
- 9 ELECTROSPINDLE DOUBLE-ACTING PNEUMATIC CYLINDER
- 10 PRESSURISATION AIR INLET
- 12 CONTINUOUS FLOW OF PRESSURISATION AIR

Oscillazioni e vibrazioni
Oscillations and vibrations



REVISIONI / REVISIONS				MATERIAL / MATERIAL		TRATTAMENTO TERMICO / HEAT TREATMENT		RIVESTIMENTO SUPERFICIALE / SURFACE TREATMENT		DENOMINAZIONE / DESCRIPTION	
0	DESCRIZIONE REVISIONE / REVISION DESCRIPTION	N°	N° CR	DATA / DATE	STATO / STATUS	Working	A2	M. Mannocchi		M. Mannocchi	
REV.								PESO / WEIGHT: 21,9 kg		SCALA / SCALE: 1:2	
DESIGNATO / DRAWN BY	CONTROLLATO / CHECKED BY	APPROVATO / APPROVED BY	GREZZO DA / RAW BY:	FOGLIO / SHEET: 1/1	QUOTE SENZA INDICAZIONE DI TOLLERANZA DIMENSIONI WITHOUT TOLERANCE INDICATIONS						
DATA	12/12/2016	14/12/2016	FIRMA / SIGN	Mannocchi M.	Bugari M.	LAVORAZIONI MECCANICHE / MACHININGS					
MATERIALE / MATERIAL:				UNI EN 22768-FH							
TRATTAMENTO TERMICO / HEAT TREATMENT:				SALDOCARPENTERIE / WELDED STRUCTURES:							
RIVESTIMENTO SUPERFICIALE / SURFACE TREATMENT:				GETTI - ESTRUSI - STAMPATI / CASTINGS - EXTRUDED-MOULDED:							
DENOMINAZIONE / DESCRIPTION:				ES951LE6L2510SD							
REPRODUCTION AND DIFFUSION IS PROHIBITED / REPRODUKTION UND VERBREITUNG IST VERBODEN				CODICE / CODE				6161H1693			