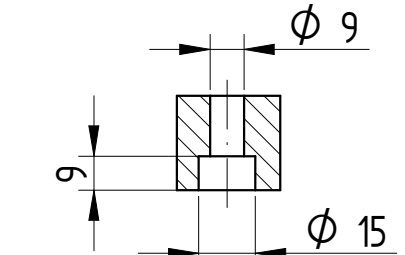
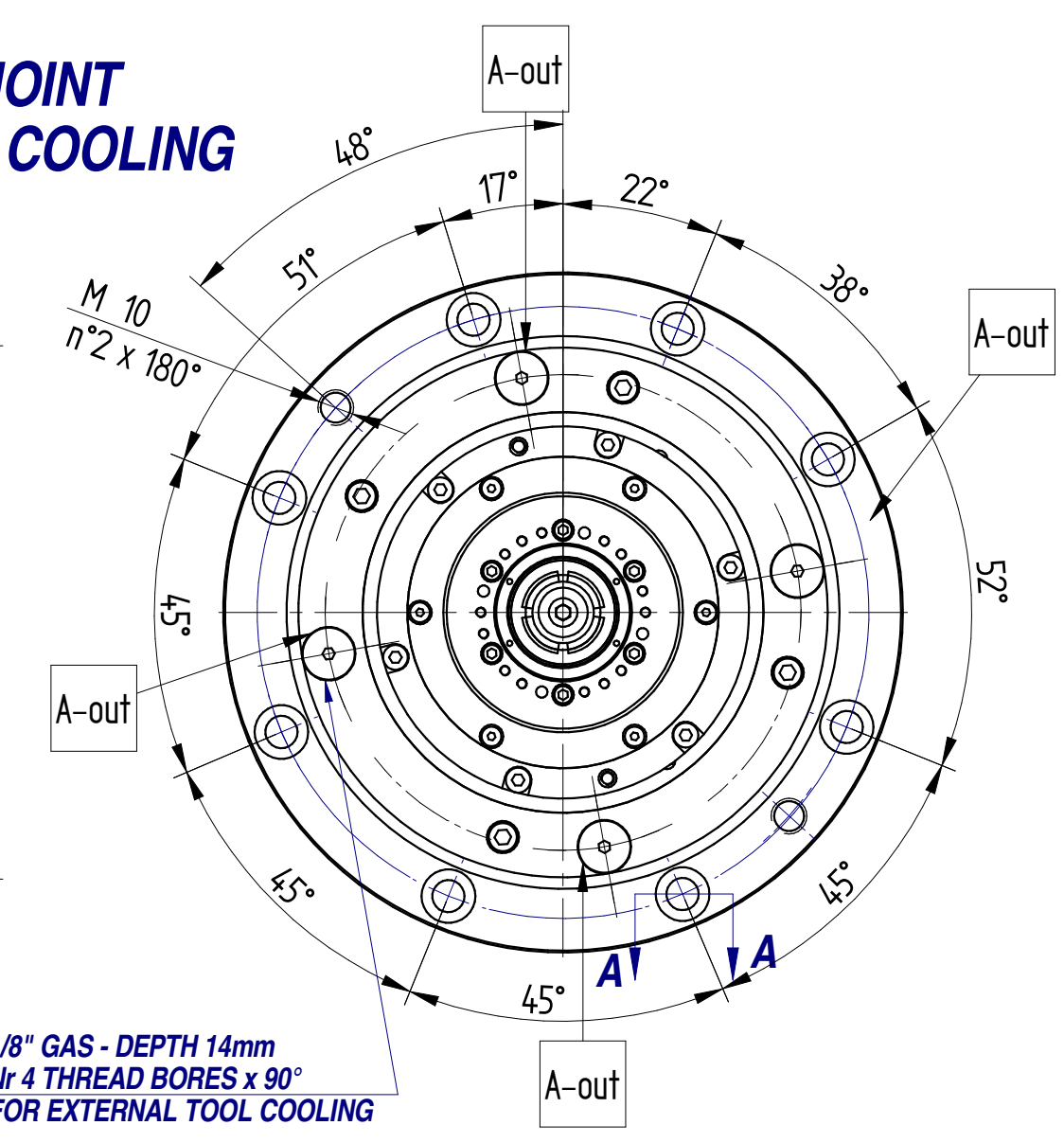
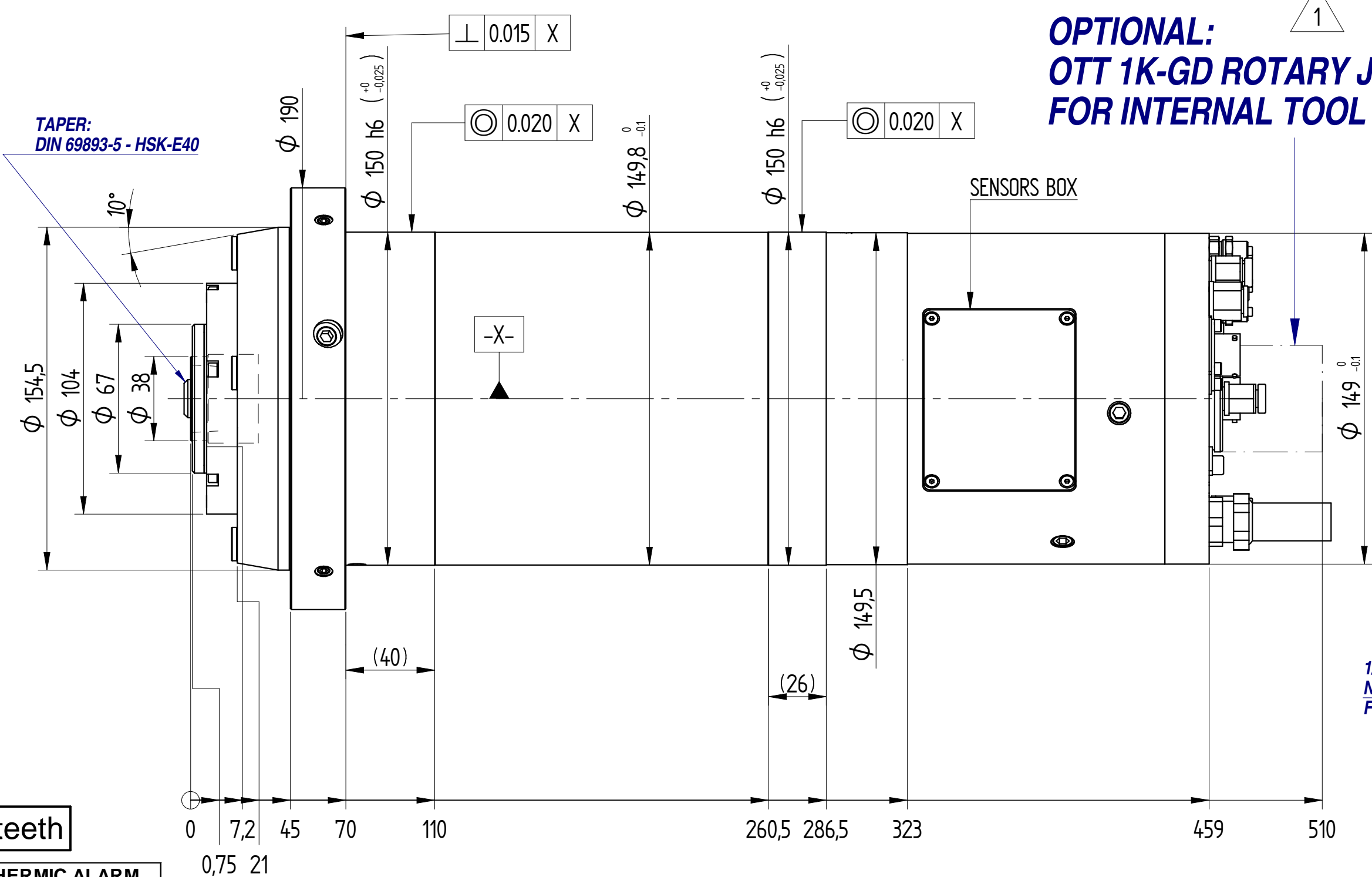
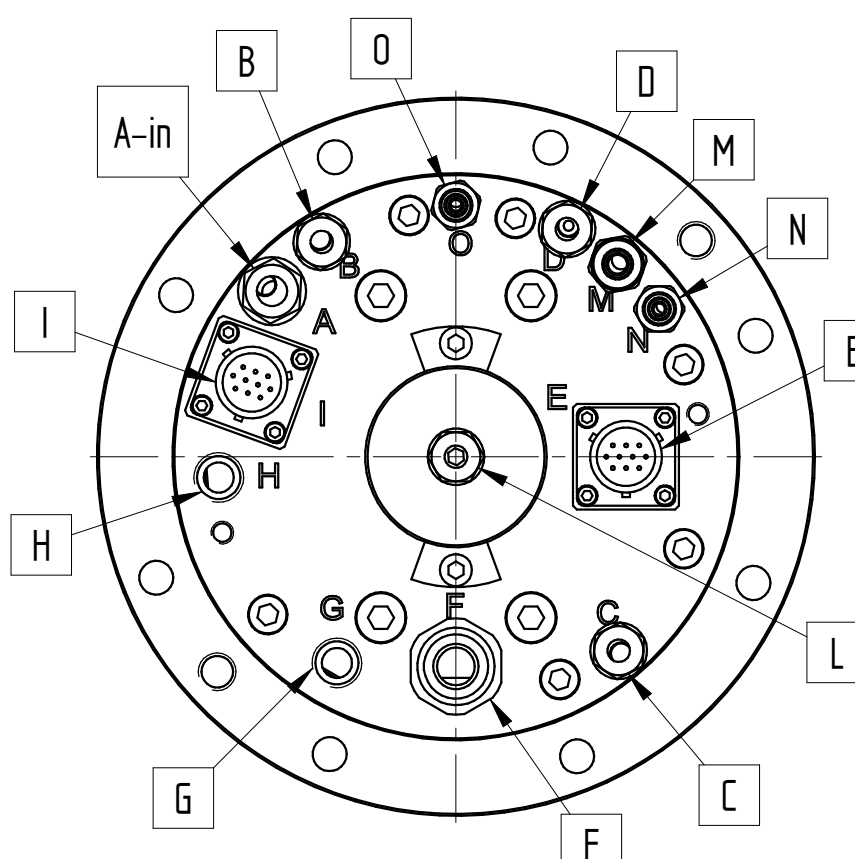
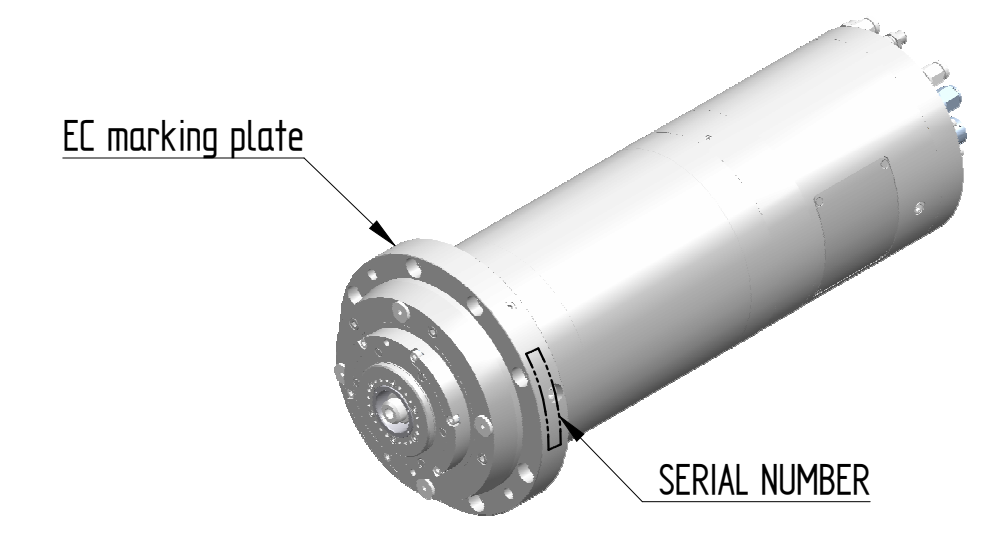


**OPTIONAL:
OTT 1K-GD ROTARY JOINT
FOR INTERNAL TOOL COOLING**

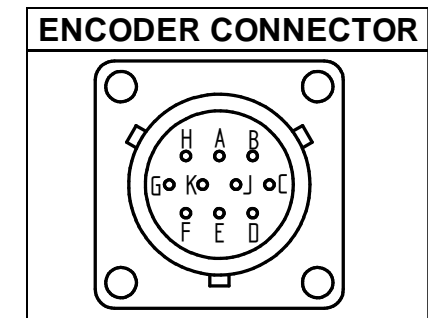


SEZ. A-A

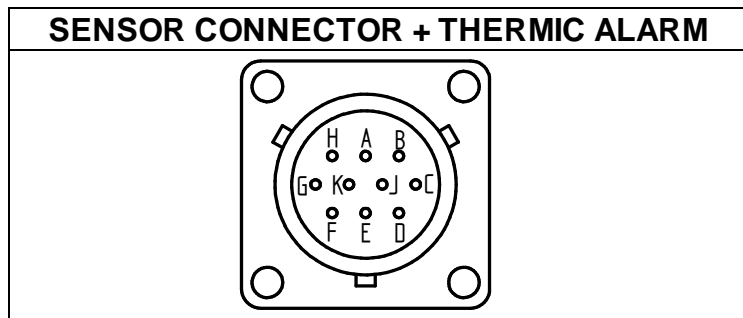


15

(*) Encoder Lenord+Bauer 1Vpp 128 teeth



PIN	DESCRIPTION
A	A+
B	A-
C	B-
D	GND
E	Z+
F	5V
G	SCREEN
J	B+
K	Z-



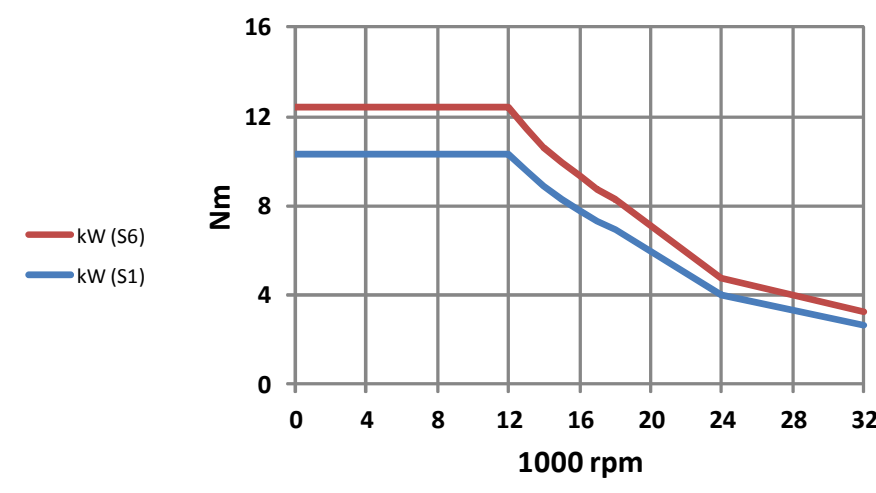
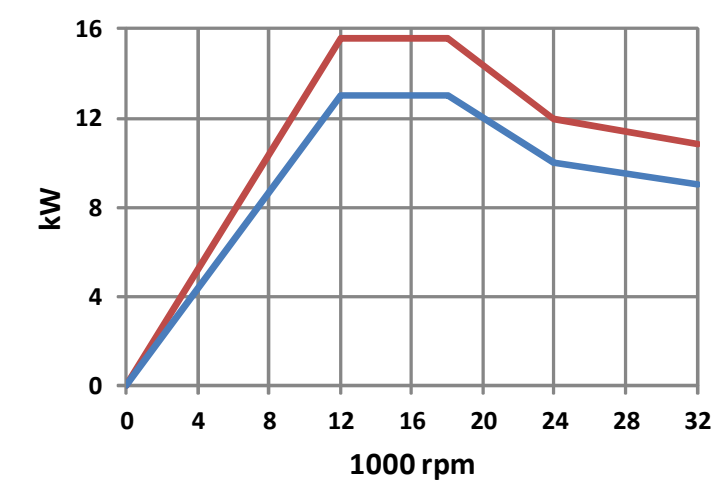
PIN	DESCRIPTION
A	OUTPUT S2 (TOOL UNLOCKED)
B	OUTPUT S1+S4 (TOOL LOCKED)
C	OUTPUT S5 (NO TOOL)
D	24V CC FEEDING SENSORS: S1, S2, S5
E	0V FEEDING SENSORS: S1, S2, S4, S5
F	THERMIC BEARINGS ALARM - T2
G	THERMIC MOTOR ALARM - BIMETALLIC N.C. 130°C
H	THERMIC BEARINGS ALARM - COMPENSATION
J	THERMIC BEARINGS ALARM - T1
K	THERMIC MOTOR ALARM - BIMETALLIC N.C. 130°C

AIR-OIL LUBRICATION DATA / FRONT BEARINGS	
Oil type	MOBIL DTE OIL HEAVY MEDIUM VG68
Oil quantity (mm3/h)	140 ÷ 170
Pressure (bar)	1,5 ± 0,2

AIR-OIL LUBRICATION DATA / REAR BEARINGS	
Tipo olio	MOBIL DTE OIL HEAVY MEDIUM VG68
Q.tà olio (mm3/h)	140 ÷ 170
Pressione (bar)	1,5 ± 0,2

POWER CABLE - LENGTH 1000mm			
WHITE	PHASE U	AWG10	
RED	PHASE V	AWG10	
BLACK	PHASE W	AWG10	
YELLOW/GREEN	GROUND	AWG10	

	380	380	380	380
V	380	380	380	380
Hz	400	600	800	1066
kW	13 (15,6)	13 (15,6)	10 (12)	9 (10,8)
Nm	10,3 (12,3)	6,9 (8,3)	4 (4,8)	2,7 (3,2)
A	27,5 (33)	27,5 (33)	21,5 (25,8)	18 (21)
rpm	12000	18000	24000	32000
Poles: 4	Ins.Cl. F	cosφ = 0,77	η = 0,88	



HYDRAULIC AND ELECTRIC CONNECTIONS

POS	DESCRIPTION
A	EXTERNAL TOOL COOLING INLET - Ø8
B	MOTOR COOLING LIQUID INLET - Ø6
C	PRESSURISATION - 4bar - Ø6
D	MOTOR COOLING LIQUID OUTLET - Ø6
E	ENCODER (*) CONNECTOR - see detail
F	POWER CABLES - see detail
G	OIL INLET FOR TOOL-HOLDER HOOK-UP - 40bar - Ø8
H	OIL INLET FOR TOOL-HOLDER RELEASE - 40bar - Ø8
I	SENSOR CONNECTOR + THERMIC ALARM - see detail
L	CONE CLEANING - 6bar - Ø6
M	OIL SUCTION BEARINGS FRONT/REAR -Ø8
N	AIR-OIL LUBRICATION INLET FRONT BEARINGS - Ø6 - 1,5bar
O	AIR-OIL LUBRICATION INLET REAR BEARINGS - Ø6 - 1,5bar

REVISIONI				PESO / WEIGHT		SCALA / SCALE		FOGLIO / SHEET			
1	Cambiata la dicitura da "external" a "internal".	1	20/11/2015	L.B.	30,734 kg		1 / 1				
REV.	DESCRIZIONE REVISIONE / REVISION DESCRIPTION	N°REV	DATA / DATE	FIRMA / SIGN							
DISEGNATO / DRAWN BY		CONTROLLATO / CHECKED BY		APPROVATO / APPROVED							
DATA DATE		30/07/2015		30/07/2015							
FIRMA SIGN		Bernabucci L.		Bugari M.							
MATERIALE / MATERIAL				TRATTAMENTO TERMICO / HEAT TREATMENT				RIVESTIMENTO SUPERFICIALE / SURFACE TREATMENT			
DENUMINAZIONE / DESCRIPTION				DIM. ES332 E40 13kW ENC L+B V14 32krpm				CICLO DI VERNICIATURA / PAINTING CYCLE			
								CORREZIONE ARTICOLO / DRAWING IT			
								5530H0739			
								1			