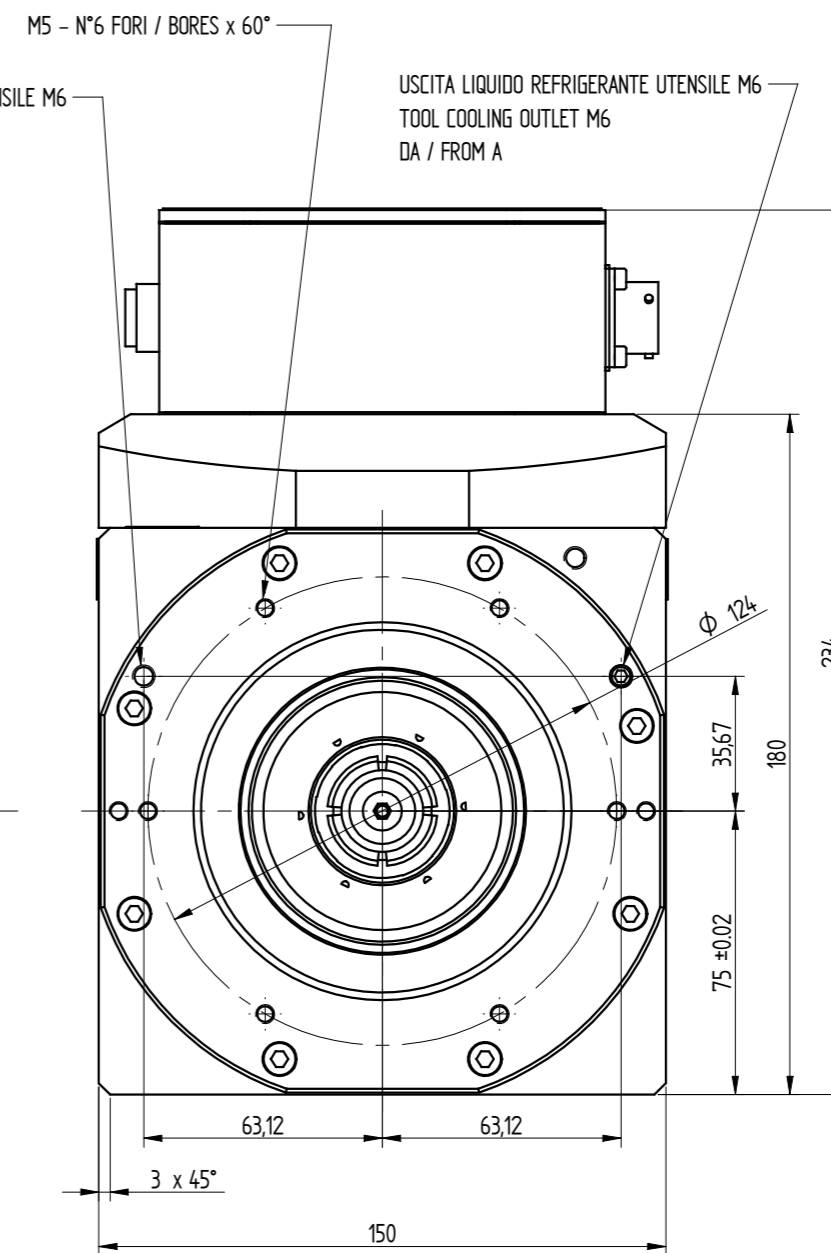
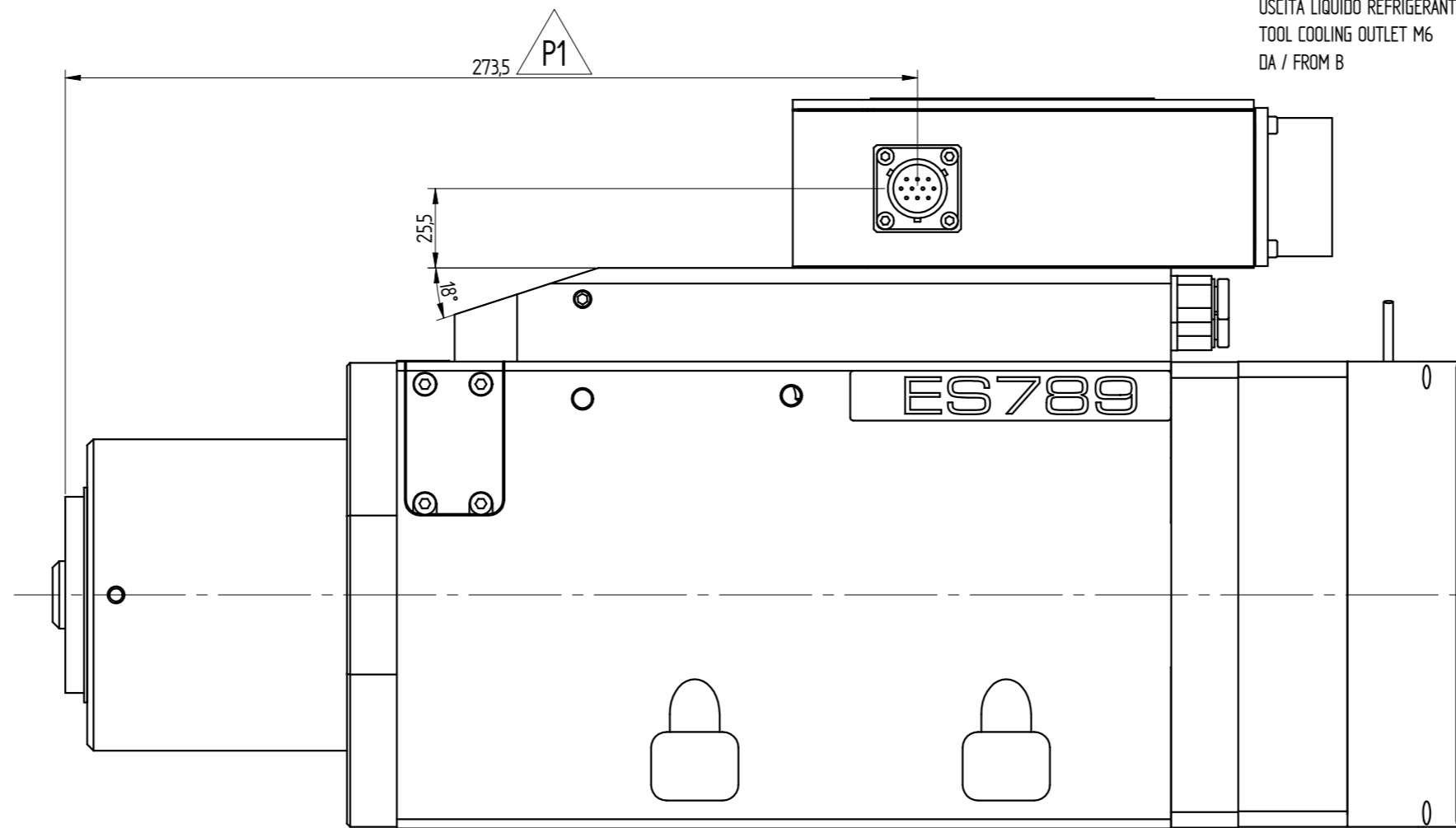
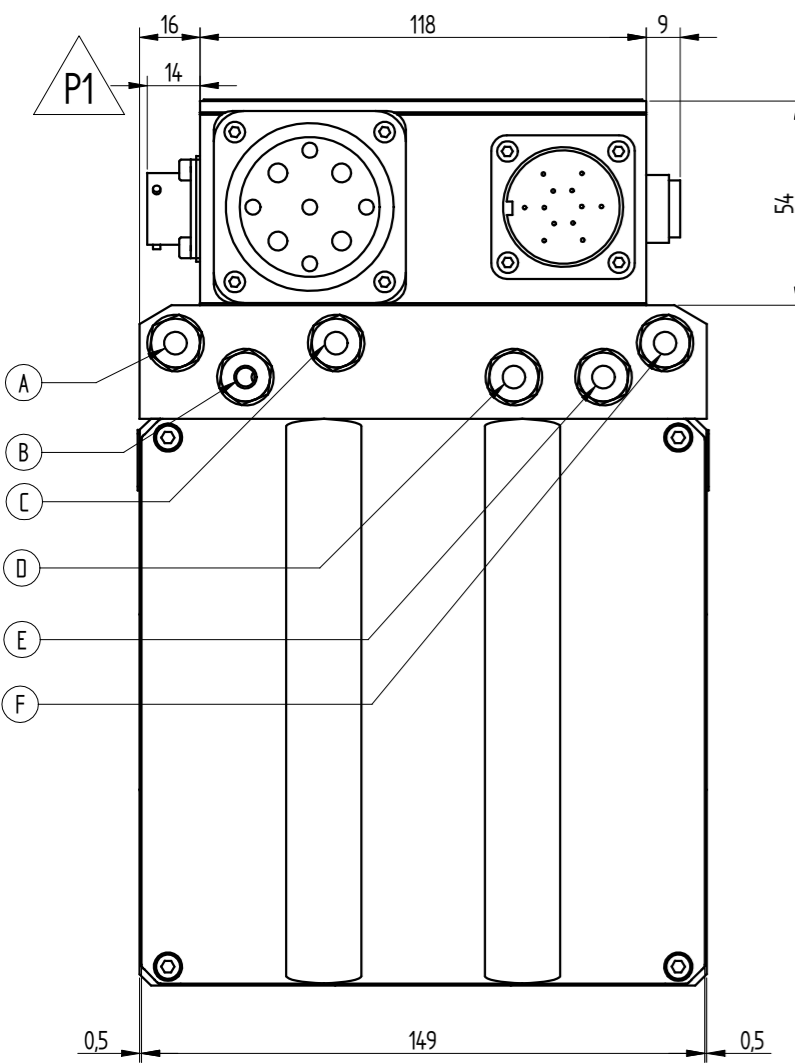
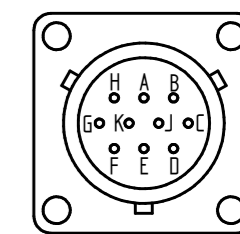


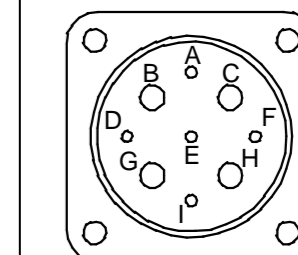
1:5



ENCODER OPZIONALE
OPTIONAL

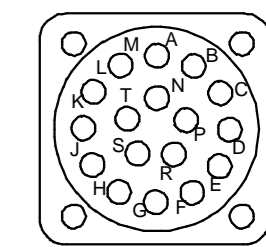


PIN	DESCRIZIONE
A	A+
B	A-
C	B+
D	BND
E	Z+
F	ENCODER Lenoar Bauer : 5 V DC
J	B+
K	Z-



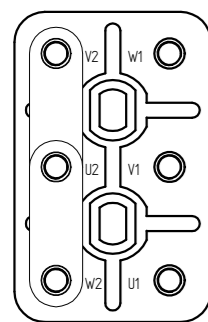
POWER CONNECTOR

PIN	DESCRIZIONE
G	Fase motore U - Motor phase U
H	Fase motore V - Motor phase V
C	Fase motore W - Motor phase W
B	Connessione di Terra - Ground
E	Protezione termica motore - Thermic Motor Alarm
F	Protezione termica motore - Thermic Motor Alarm



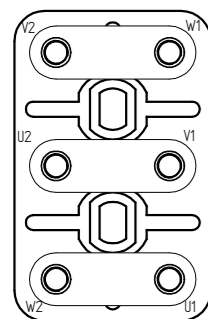
SIGNAL CONNECTOR

PIN	DESCRIZIONE
A	OUTPUT sensor S2 (utensile espulso-tool unlocked)
B	OUTPUT serie sensors S1+S4 (utensile bloccato-tool locked)
C	OUTPUT sensor S3 (albero fermo - shaft not running)
D	+24V CC alimentazione/feeding sensor: S1, S2, S3
E	+24V CC alimentazione/feeding lamp of the pushbutton - LAMPADINA del pulsante.
F	0V alimentazione/feeding sensor S1, S2, S3, S4
G	+24V CC alimentazione/feeding PULSANTE pushbutton sensor SC (Azzeramento Asse C - Zeroing for C-Axis)
H	OUTPUT PULSANTE pushbutton
J	0V alimentazione/feeding LAMPADINA - lamp of the pushbutton, sensor SC - sensor C-Axis
L	OUTPUT sensor SC - sensor C-Axis (azzeramento Asse C - Zeroing for C-Axis)
M	Per manutenzione - Maintenance
N	
P	
K	
R	
S	
T	

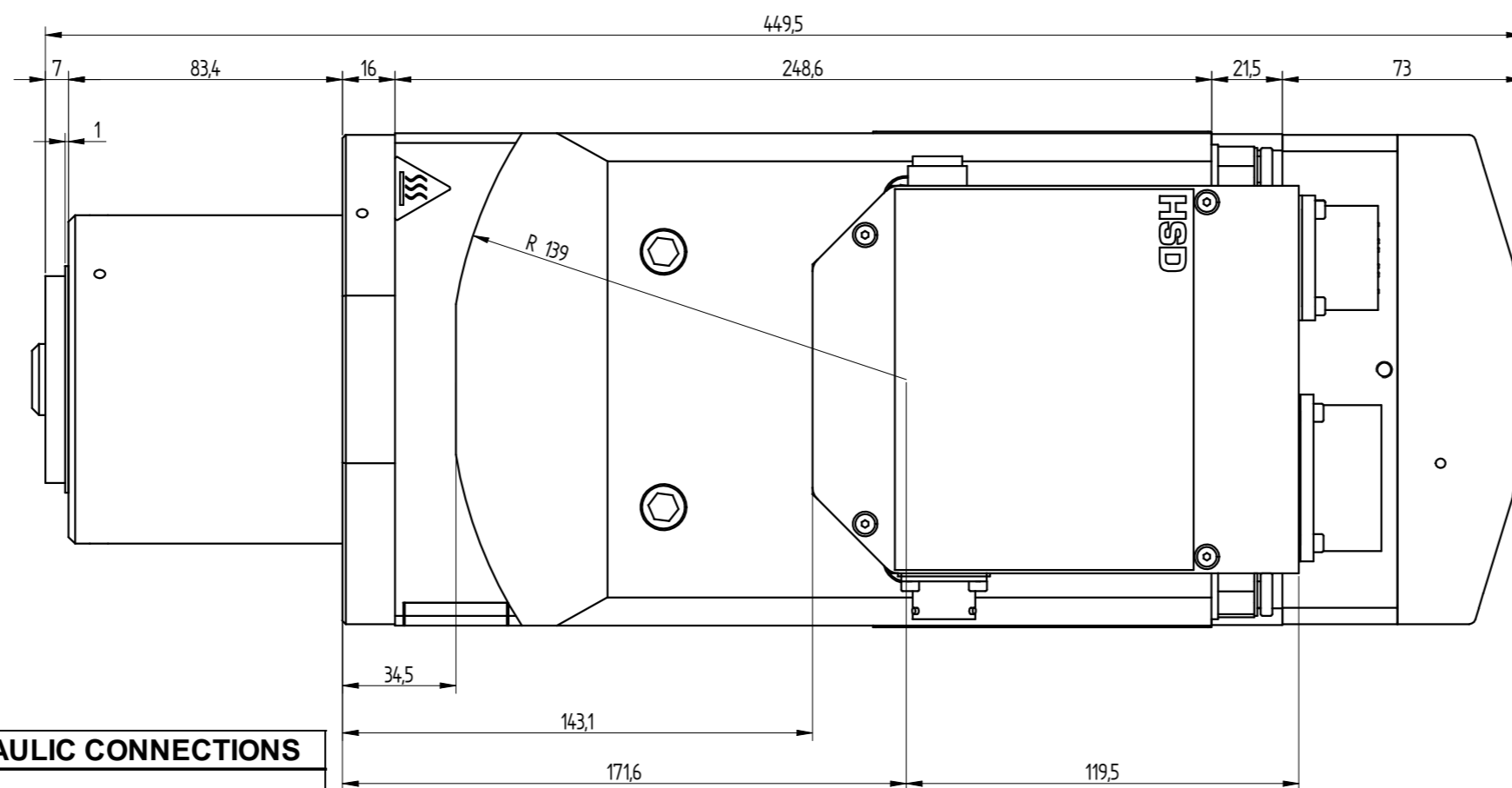


COLLEGAMENTO ELETTRICO A STELLA 380V
ATTENZIONE!!! IL MANDRINO VIENE FORNITO COLLEGATO IN QUESTO MODO

ELECTRICAL CONNECTION STAR 380V
WARNING!!! THE ELECTROSPINDLE IS CONNECTED IN THIS WAY FROM THE SUPPLIER



COLLEGAMENTO ELETTRICO A TRIANGOLO 220V
ELECTRICAL CONNECTION DELTA 220V

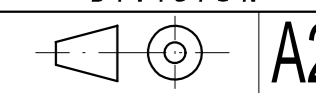


UTENZE PNEUMATICHE E IDRAULICHE / PENUMATIC & HYDRAULIC CONNECTIONS

RIF	DESCRIZIONE / DESCRIPTION
A	Ø6 - Ingresso liquido refrigerante utensile / Tool cooling liquid inlet
B	Ø6 - Ingresso liquido refrigerante utensile / Tool cooling liquid inlet
C	Ø6 - Ingresso liquido refrigerante elettromandrino / Electrospindle cooling liquid inlet
D	Ø6 - Uscita liquido refrigerante elettromandrino / Electrospindle cooling liquid outlet
E	Ø6 - Ingresso aria pressurizzazione e pulizia cono / Pressurization and cone cleaning air inlet
F	Ø6 - Ingresso/uscita aria per cambio utensile / Tool release air I/O

P1 Mod. position of encoder connector		18/06/12	B.M.
REV.	DESCRIZIONE REVISIONE / REVISION DESCRIPTION	DATA / DATE	FIRMA SIGN
DESIGNATO / DRAW BY	CONTROLLATO / CHECKED BY	APPROVATO / APPROVED	SCALA : SCALE : 1 : 2
DATA DATE	11/06/2012		PESO : WEIGHT : 35,288 kg
FIRMA SIGN	Bugari M.		GREZZO DI: RAW :
MATERIALE : MATERIAL :			SOSTITUISCE : REPLACE :
TRATTAMENTO TERMICO : HEAT TREATMENT :			CICLO DI VERNICIATURA : PAINTING CYCLE :
RIVESTIMENTO SUPERFICIALE : SURFACE TREATMENT :			REVISIONE REVISION
DENOMINAZIONE : DESCRIPTION :	DIM. ES789 F63 NL 15kWDP 220/380V BAS.MIL ENC LB		P1
REPRODUCTION AND OR DISCLOSURE OF THE DRAWING IS FORBIDDEN			REVISIONE REVISION
			ARTICOLO DRAWING NO
			5530H0664

HSD
DIVISION



QUOTE SENZA INDICAZIONE DI TOLLERANZA
POSITIONS WITHOUT TOLERANCE INFORMATION
LAVORAZIONI MECCANICHE
MECHANICAL WORKINGS
UNI EN 22768-FH

SALDOCORPENTERIE :
WELDMENT
GETTI :
MELT CASTING